

# J&J Service Instructions

October, 27 2000

Page 1

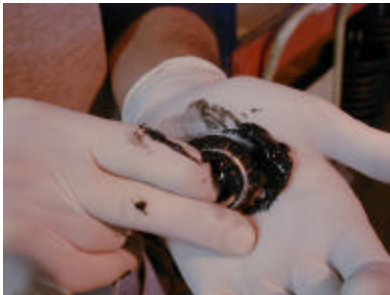
## How to Properly pack Tapered Style Wheel Bearings



1. Begin by removing the dust cap, using Channel Locks grasp the dust cap firmly and work up and down while pulling outward as well. Remove the cotter pin and castle nut set aside the castle nut and dust cap. Throw away the cotter pin, it will not be re-used.



2. Remove the Wheel Bearing Seal, wipe off the excess grease from the Wheel Bearings as well as the Hub Assembly. (do not use solvent to clean the Bearings) Inspect the Wheel Bearings and the Bearing Races for pitting or excess wear and replace as needed. Throw away the Wheel Bearing Seal, it will not be re-used.



3. Pack Wheel Bearings with Wheel Bearing Grease either by hand or with Wheel Bearing packing tool, forcing grease into the cage and roller assembly. Put a film of grease on the Both Wheel Bearing Races and on the Spindle shaft.



4. Install rear Wheel Bearing and rear Wheel Bearing Seal. Use a large seal installation tool to avoid damaging seal.

Web Site: <http://www.jjamusements.com>

**If you have any questions please give us a call at (800) 854-3140 or (503) 363-7533.**

# J&J Service Instructions

October, 27 2000

Page 2



5. Put a light film of grease around the lip of the Grease Seal to keep it from tearing during installation. Wipe of the excess grease prior to installing.



6. Install the front Wheel Bearing and castle nut, torque the castle nut to 15 ft. lbs to seat the Wheel Bearings properly. Then loosen the castle nut to finger tight and rotate the Hub Assembly the hub should rotate freely. Line up the hole for the cotter pin through the castle nut by tightening the castle nut then double check that the Hub Assembly rotates freely and has no play on the Spindle.



7. Install a new cotter pin, using a brass drift punch, tap the head of the cotter pin down into the castle nut. When complete the head of the cotter pin should be crushed just slightly.



Fold the front half of the cotter pin over the Spindle and cut of the back half with a pair of cutter (as seen in the picture) Re-install the dust cover.

Web Site: <http://www.jjamusements.com>

**If you have any questions please give us a call at (800) 854-3140 or (503) 363-7533.**