

SERVICE BULLETIN

February 9, 1996

Thunder-02

Trim Update

AFFECTED MODELS

ThunderBolt go-karts sold between December 1, 1995 to January 6, 1996

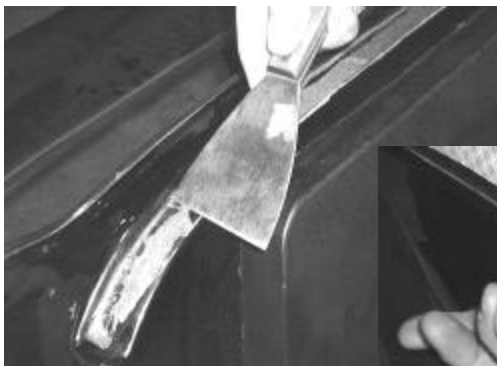
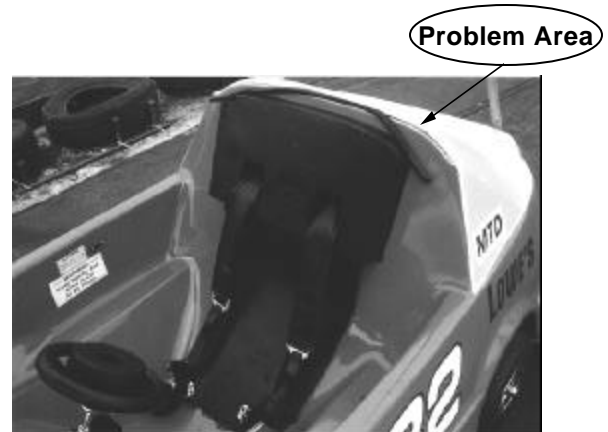
SYMPTOM

Movement of roof causing roof trim to pull away from body.

CORRECTIVE ACTION

Install new trim.

Trim, Self Adhesive ThunderBolt Roof **Part#002677A**



Step 1: Clean surface.



Step 2: Remove adhesive as you apply.



Step 3: Apply by pressing trim firmly against body.

Warranty: The normal warranty applies. Updated parts will