

# J&J Service Instructions

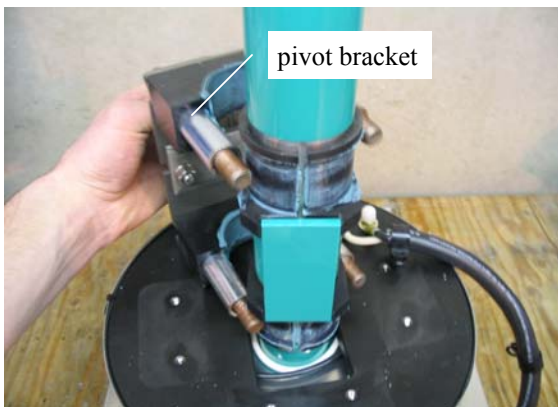
## Flex Wire II Install



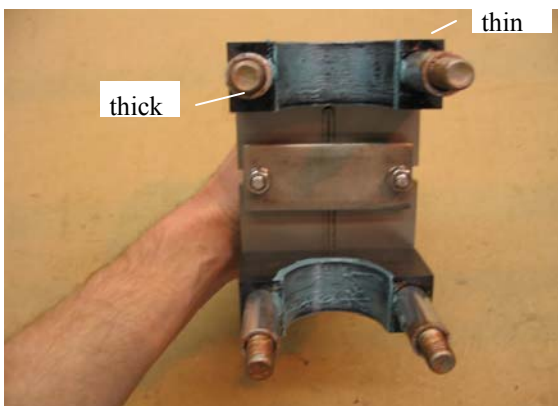
- Place motor on bench upside down with motor cover removed.
- Remove gearbox assembly by removing the four 1/4" bolts.
- Next remove gasket as this item should be replaced.



- Remove the six allen cap headed screws. Next remove the 3/4m inch nuts.
- Remove the pivot shield.



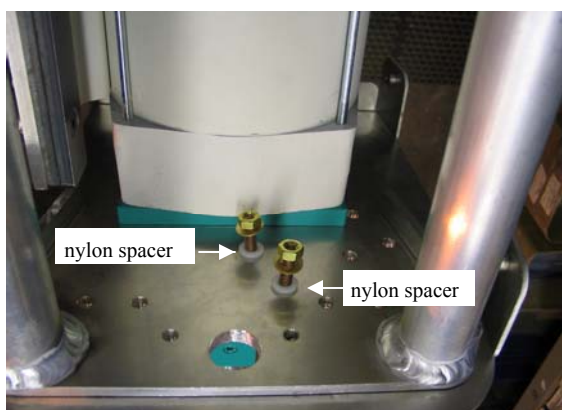
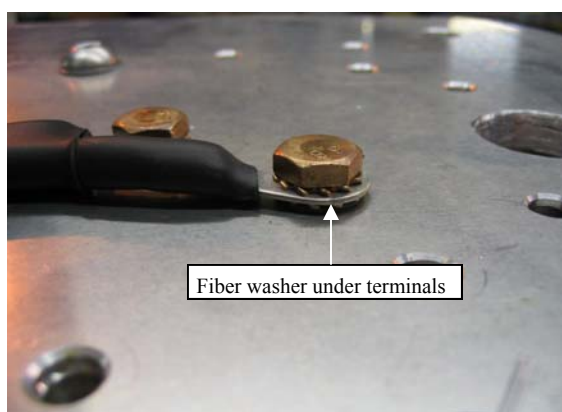
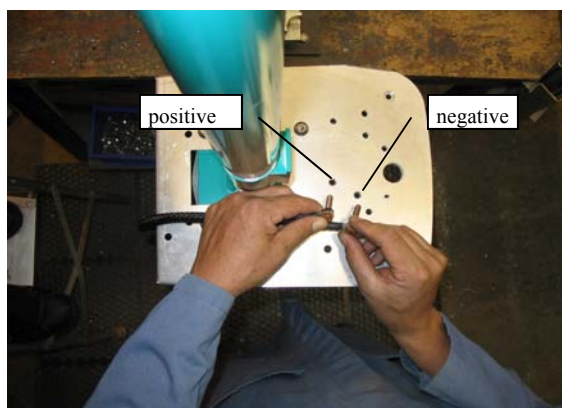
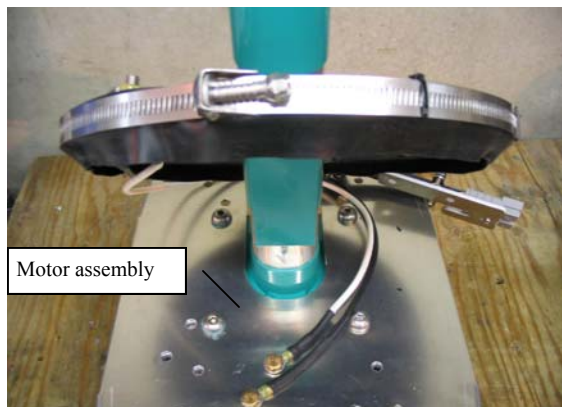
- Remove the pivot bracket.



- Inspect bushing for wear i.e. grooves, pitting, and cracking. If any of the above conditions exist it is recommended that they be replaced.
- The mount bushings do have a top and bottom.
- Position the bushings thicker part to the top of motor. Thin part toward propeller.

# J&J Service Instructions

## Flex Wire II Install



- Remove old flex wires from motor assembly.
- Remove UHMW disk. It can be discarded as it will not be used.

- Install flex wire II assembly.

- When installing be sure that there are fiber washer under terminals.
- Terminal must not make direct contact with the aluminum.

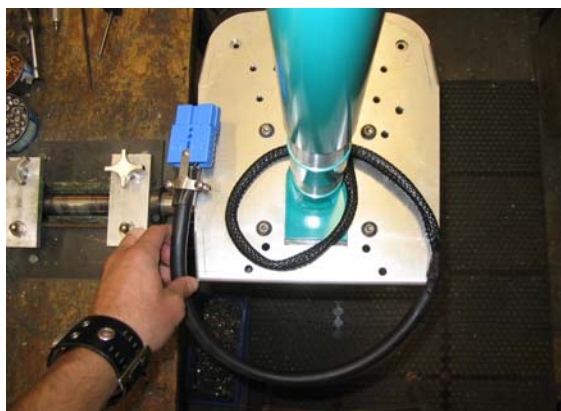
- Make sure that the nylon spacers are in place before you tighten.

# J&J Service Instructions

## Flex Wire II Install



- Tighten terminal bolts and nuts, making sure that you don't twist the wires.



- Layout wire around drive shaft housing as shown.



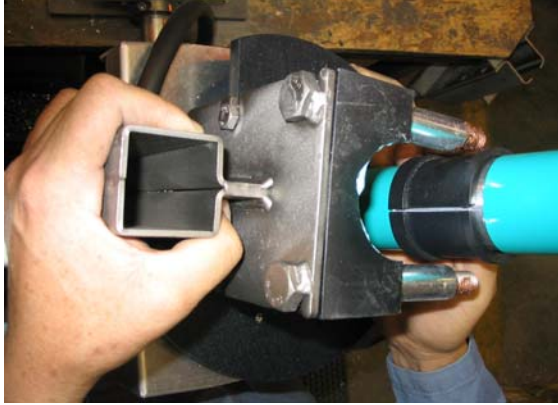
- Install clamp around 10/2 cable where it necks down.



- This is what you should be looking at after you have clamped down wire assembly.
- Note the direction of cable and the orientation of UHMW plate to motor.

# J&J Service Instructions

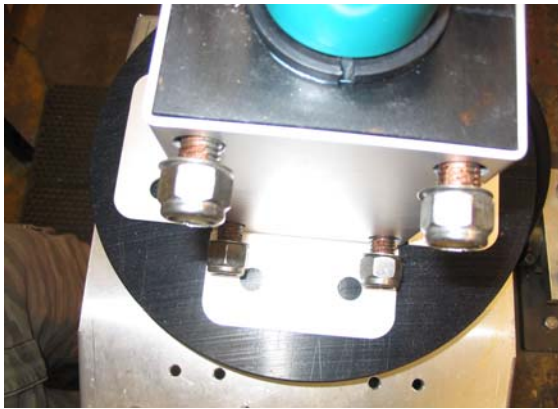
## Flex Wire II Install



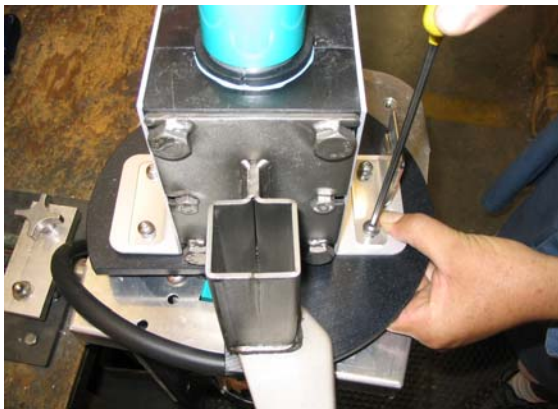
- Install pivot bracket.
- Make sure have receiver end facing towards front side of motor assembly.

### TECH TIP

To help hold the drive shaft housing bushings, place a small dab of marine grease on the backside of bushings.



- Install the pivot shield bracket.
- Use a copper anti seize on pivot bracket bolts.



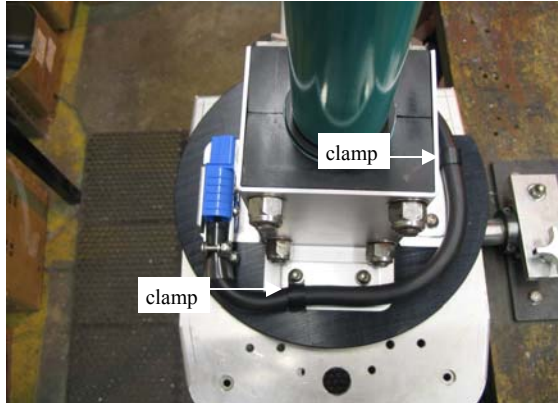
- Install bracket for power plug.
- Finish installing the other two flat brackets



- Install plug using the 6/32 bolt and nylock nut.

# J&J Service Instructions

## Flex Wire II Install



- Install remaining clamps around 10/2 cable.

- Install gearbox.
- Using a new gasket with a light bead of silicone around surfaces is recommended.

- Before putting motor into operation. Rotate motor stop to stop and check for any binding.

## Parts

**2-70-A0038** Cable, 45" 10/2 (Motor to SB-120 Plug) Flex replacement

**2-70-A0039** Cable, 45" 10/2 (Motor to SB-50 Plug) Flex replacement