



ELECTRIC POWERED

SIDEWINDER

SPECIFICATIONS

Length.....82"(208cm)
Width.....55"(140cm)
Height.....40"(102cm)
Wheelbase.....44.125"(112cm)
Tires.....J&J Bigfoot 12"x4.00x5"
Ground clearance.....2.5"(6cm)

Motor

D&D 48vdcSeparately Excited
Peak watts.....13.9kw@ 600amp

Brakes

Self adjusting hydraulic disc
Quick change brake pads
Stainless steel braided brake lines

Safety Equipment

4 point seat belt harness with quick release
tabs and padded shoulder straps.
Tubular steel frame mounted roll bar
Non-spill fuel tank vent system (on optional tanks)

OPTIONAL EQUIPMENT

Asmo 48vdc Permanent Magnet
electric motor.
240 or 400 volt chargers available.
Hour meter.
Front and rear "Nerf Bars".
Stock car replica graphics
packages.
Many more options available.



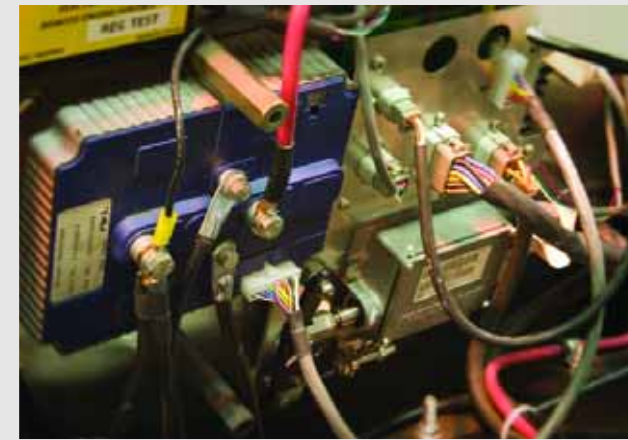
J&J exclusive Linear Actuator

SIDEWINDER - Electric

Based on J&J's renowned unitized chassis for simple, safe, and easy operation and maintenance.

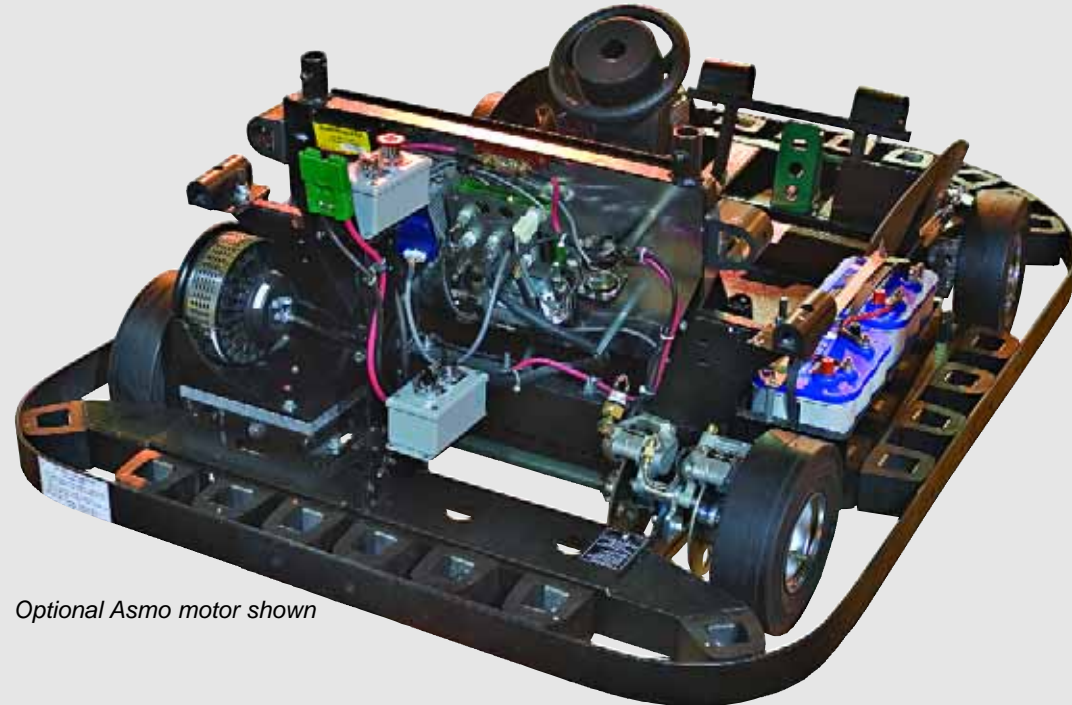
This tough electric "DOUBLE WIDE" go-kart has all of J&J's standard features plus:

- High torque electric motor.
- Industrial controller with "On-Board Diagnostics".
- Safety interlock to prevent unattended "run-away" go-karts.
- Industrial throttle mechanism.
- Broken wire protection.
- Full regeneration capability.
- Two forward speeds plus reverse.
- All industrial switches.
- Modular circuit board for easy diagnostics, replacement.(eliminates excess wiring).
- Kartrol "Remote Shut-Down" available.
- Four Gel Cell deep cycle batteries.
- "All Stop" switch.
- "Back Up" mode (engageable by attendant, not driver).
- Safety feature: Accelerator pedal will not operate while in "Back-Up" mode.
- Heavy duty "Anderson" style connectors.



Industrial Grade Electronics

Visit our website at
www.jjamusements.com
for more exciting information
including photos and color
combinations.



Optional Asmo motor shown



Amusements, Inc.
A Corporation of Oregon

4897 Indian School Rd NE.
Salem, OR. 97305 USA
E-mail: info@jjamusements.com
www.jjamusements.com

503-304-8899
1-800-854-3140
FAX: 503-304-1899

Our dedication to constant development necessitates that descriptions and specifications presented in our literature are subject to change without notice.